

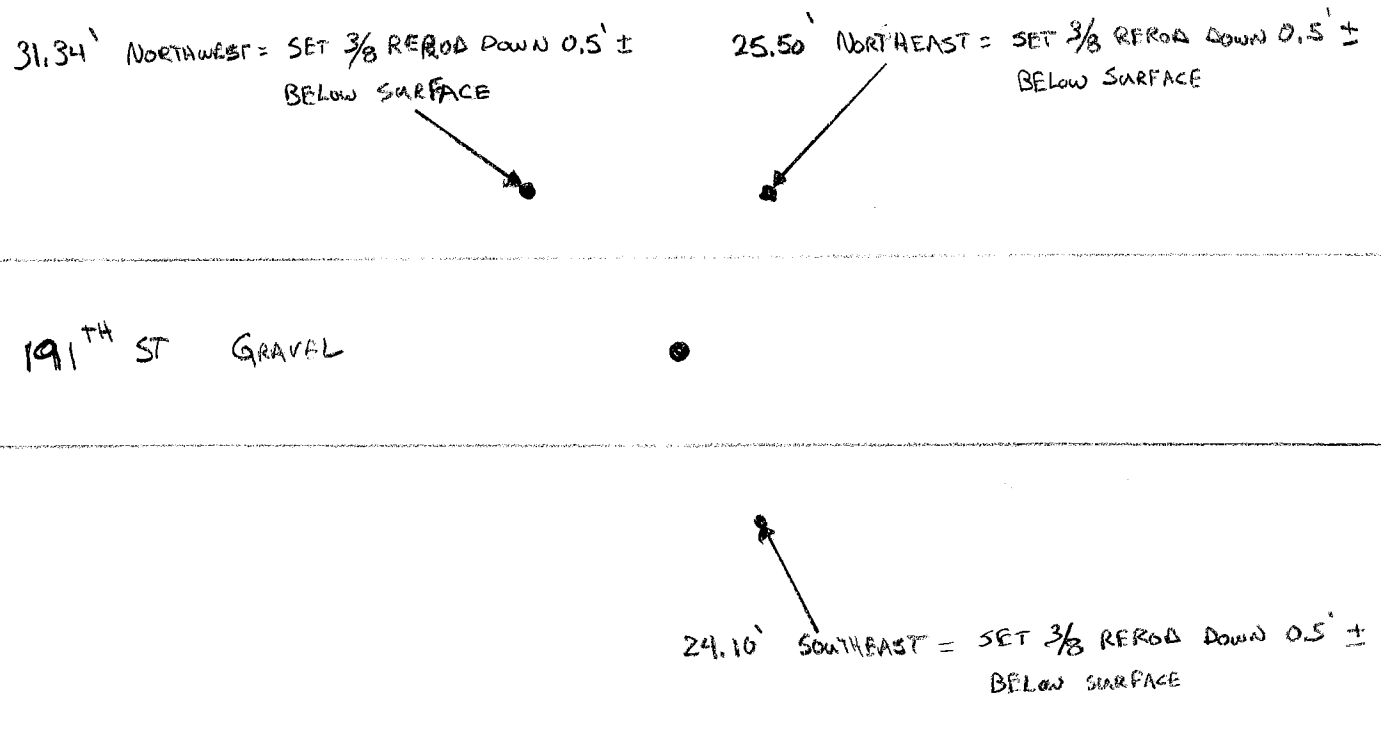
# CERTIFICATE OF LOCATION OF GOVERNMENT CORNER

NORTH QUARTER Corner of Section 31, Township 108 N, Range 43 W, 5<sup>th</sup> P.M.  
 STATE OF MINNESOTA, County of MURRAY

At the corner location shown on the sketch:

- On 7/5/07 found a 1/2" CAPPED IRON PIPE # 11943 DOWN 0.4' BELOW SURFACE  
DATE
- left monument as found,       lowered monument,       removed monument (explain)
- On \_\_\_\_\_ placed a \_\_\_\_\_  
DATE

### SKETCH OF REFERENCE TIES



Statement of evidence relative to this corner location is on back of page.

I hereby certify that this document and the data contained herein was prepared by me or under my direct supervision.

*[Signature]*  
SIGNATURE

Registration No. 40853

Land Surveyor,       Professional Engineer  
 County Surveyor,       County Engineer

OFFICE OF THE COUNTY RECORDER  
 County of \_\_\_\_\_

I hereby certify that this document was filed in the Co. Recorders office at \_\_\_\_\_ M. on the \_\_\_\_\_ day of \_\_\_\_\_ A.D., 20\_\_\_\_

County Recorder \_\_\_\_\_  
 By \_\_\_\_\_, Deputy  
 DOCUMENT NO. \_\_\_\_\_